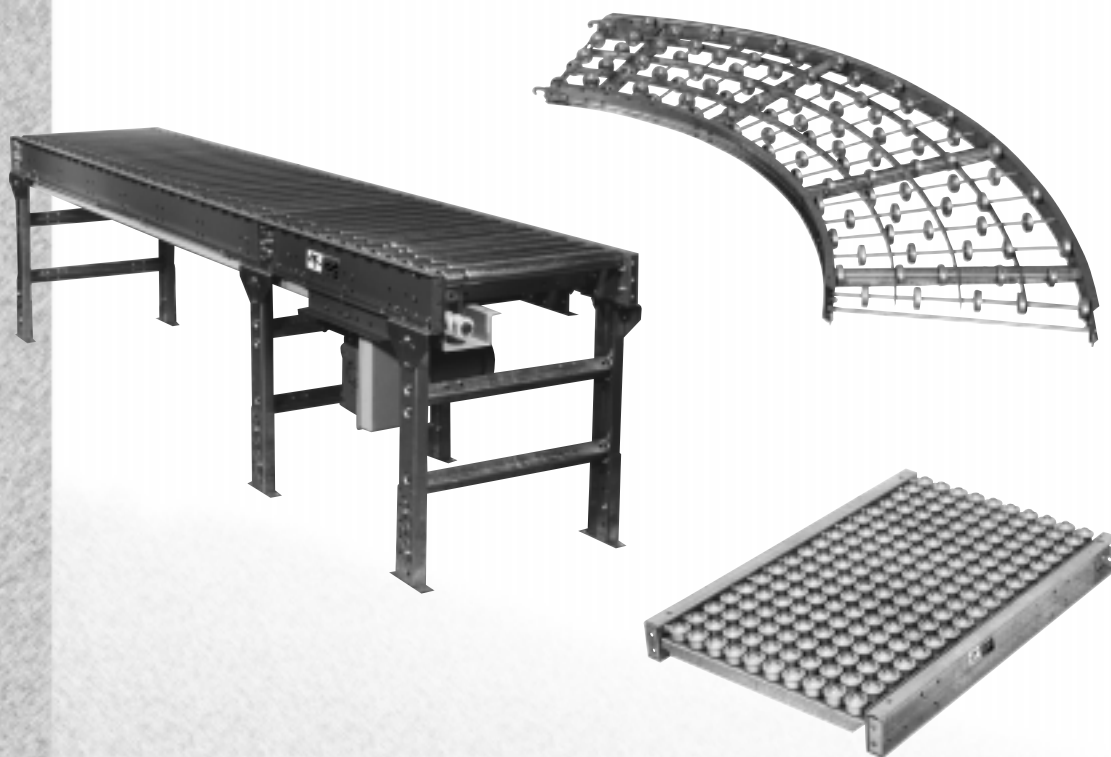


# 24 Hour Conveyors SHIP



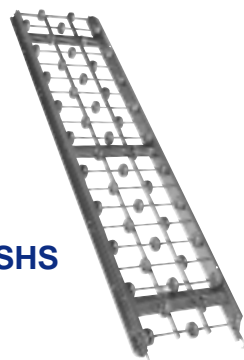
## 24 HOUR SHIP POLICY

- Orders placed before 2:00 P.M. EST will be shipped the following business day.
- Orders placed after 2:00 P.M. EST will be shipped the second following business day.
- Shipment routing to be determined by Omni Metalcraft Corp.
- All weights listed in this section DO NOT include crating.
- Quantity available for shipment is contingent upon quantity in stock at time of order.
- All orders subject to Omni Metalcraft Corp.'s Standard Terms and Conditions of Sale.

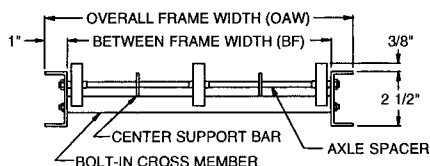
Gravity Skatewheel Conveyor .....	18
1 3/8 in. dia. Gravity Roller Conveyor .....	19
1.9 in. dia. Gravity Roller Conveyor .....	20
2 1/2 in. dia. Gravity Roller Conveyor .....	21
Ball Transfer Tables .....	21
Lineshaft Driven Live Roller Conveyor .....	22
Slider Bed Belt Conveyor .....	23
Roller Bed Belt Conveyor .....	23
Belt Driven Live Roller Conveyor .....	24
Chain Driven Live Roller Conveyor .....	25
Flow Rail .....	25
Leg Supports .....	26
Skatewheels .....	26
Ball Transfers .....	27
1 3/8 in. dia. Rollers .....	27
1.9 in. dia. Rollers .....	27 - 28
2 1/2 in. dia. Rollers .....	28

## Gravity Skatewheel Conveyor

Gravity Skatewheel Conveyors are uniquely designed to convey lightweight packages or for use in operations requiring lightweight movable sections. Differential action of the wheels insures proper orientation of packages.



Model WSHS



- 5 Widths
- Steel or Aluminum Frames
- 5 ft. and 10 ft. Sections
- Axles on 3 in. Centers

### Standard Specifications:

**Frame** - 2 1/2 in. deep x 1 in. flange x 12 ga. galvanized steel or 1/8 in. aluminum channel with bolt-in cross members spaced on 2 ft. centers.

**Widths** - 12 in., 15 in., 18 in., 24 in. and 30 in. overall.

**Couplings** - Hooks on one end, rod on opposite end. All couplings are bolted to frame.

**Lengths** - 5 ft. and 10 ft. straight sections.

**Wheels** - 1 15/16 in. dia. corrosion resistant aluminum or zinc coated steel wheels with lifetime lubrication.

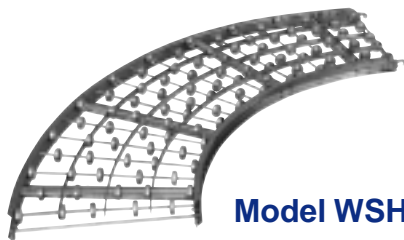
**Axles** - 1/4 in. dia. threaded one end with locknut. Spaced on 3 in. centers. Spacers are zinc coated steel.

LOAD CAPACITY CHART			
Frame Material	Support Centers	Frame Capacity Max. Uniformly Dist. Load	Wheel Capacity Max. Static Load Per Wheel
Steel	5' 0" 10' 0"	1300 lbs. 350 lbs.	65 lbs.
Aluminum	5' 0" 10' 0"	710 lbs. 160 lbs.	50 lbs.

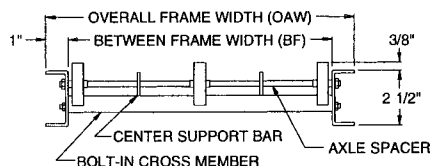
SKATEWHEEL CONVEYOR									
Steel Frames					Aluminum Frames				
Overall Width	Model No.	WPF	Weight (lbs.)		Overall Width	Model No.	WPF	Weight (lbs.)	
			5' 0"	10' 0"				5' 0"	10' 0"
12"	WSHS3-12-10	10	37	72	12"	WAHS3-12-10	10	20	38
15"	WSHS3-15-10	10	40	77	15"	WAHS3-15-10	10	22	42
18"	WSHS3-18-16	16	47	92	18"	WAHS3-18-16	16	27	53
24"	WSHS3-24-20	20	58	133	24"	WAHS3-24-20	20	34	66
30"	WSHS3-30-24	24	69	134	30"	WAHS3-30-24	24	41	80

## Gravity Skatewheel Curve Conveyor

Gravity Skatewheel Curve Conveyors are compatible with straight sections, providing flexibility to your conveyor line. Differential action of the wheels insures proper orientation of packages.



Model WSHC



- 5 Widths
- Steel or Aluminum Frames
- 45° and 90° Curves
- Hooks and Rods on Ends

### Standard Specifications:

**Frame** - 2 1/2 in. deep x 1 in. flange x 12 ga. galvanized steel or 1/8 in. aluminum channel with bolt-in cross members.

**Widths** - 12 in., 15 in., 18 in., 24 in. or 30 in. overall.

**Curves** - 45° and 90° with 48 in. outside radius for 12 in., 15 in., and 18 in. widths and 60 in. outside radius for 24 in. and 30 in. widths.

**Couplings** - Hooks and rods on both ends of curve.

**Wheels** - 1 15/16 in. dia. corrosion resistant aluminum or zinc coated steel wheels with lifetime lubrication.

SKATEWHEEL CURVE CONVEYOR									
Steel Frames					Aluminum Frames				
Overall Width	Model No.	WPF	Weight (lbs.)		Overall Width	Model No.	WPF	Weight (lbs.)	
			45°	90°				45°	90°
12"	WSHC3-12-10	10	20	41	12"	WAHC3-12-10	10	11	22
15"	WSHC3-15-10	10	22	43	15"	WAHC3-15-10	10	12	23
18"	WSHC3-18-16	16	25	51	18"	WAHC3-18-16	16	14	29
24"	WSHC3-24-20	20	41	78	24"	WAHC3-24-20	20	26	49
30"	WSHC3-30-24	24	48	91	30"	WAHC3-30-24	24	28	54

**Axles** - 1/4 in. dia. threaded one end with locknut. Spaced on 3 in. equivalent centers. Spacers are zinc coated steel.

**Capacity** - Same "Per Foot" capacity as straight sections.

**24  
HOUR  
Ship**

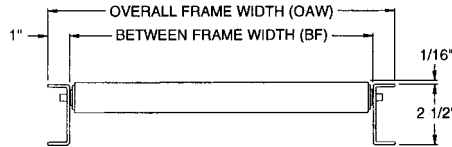
## Gravity Roller Conveyor

1 3/8 in. dia. x 18 ga. Rollers



Model RSHS

1-3/8 in. dia. Gravity Roller Conveyors are ideal for carrying lightweight packages or for use in operations requiring lightweight movable sections. They are compatible with curves, providing flexibility to your conveyor line.



- 5 Widths
- Steel or Aluminum Frames
- 5 ft. and 10 ft. Sections
- 7 Roller Centers

### Standard Specifications:

**Frame** - 2 1/2 in. deep x 1 in. flange x 12 ga. galvanized steel or 1/8 in. aluminum channel with bolt-in cross members spaced on 2 ft. centers.

**Widths** - 12 in., 15 in., 18 in., 24 in. and 30 in. overall.

**Couplings** - Hooks on one end, rod on opposite end. All couplings are bolted to frame.

**Lengths** - 5 ft. and 10 ft. straight sections.

**Rollers** - 1 3/8 in. dia. x 18 ga. galvanized steel or heat-treated aluminum tubing. Oiled ball bearings both ends.

**Axles** - 1/4 in. dia. spring retained axle spaced on 1 1/2 in., 3 in., 4 in., 6 in., 8 in., 9 in. and 12 in. centers.

LOAD CAPACITY CHART			
Frame Material	Support Centers	Frame Capacity	Roller Capacity
		Max. Uniformly Dist. Load	Max. Load Per Roller
Steel	5' 0"	1300 lbs.	120 lbs.
	10' 0"	350 lbs.	
Aluminum	5' 0"	710 lbs.	
	10' 0"	160 lbs.	

1 3/8 in. ROLLER CONVEYOR								
Steel Frames					Aluminum Frames			
Overall Width	Model No.	Roller Centers	Weight (lbs.)		Overall Width	Model No.	Roller Centers	Weight (lbs.)
			5' 0"	10' 0"				
12"	RSHS1.4-12-1.5	1.5	54	107	12"	RAHS1.4-12-1.5	1.5	29
	RSHS1.4-12-3	3	38	74		RAHS1.4-12-3	3	19
	RSHS1.4-12-6	6	30	57		RAHS1.4-12-6	6	15
	RSHS1.4-12-12	12	25	49		RAHS1.4-12-12	12	12
15"	RSHS1.4-15-1.5	1.5	64	127	15"	RAHS1.4-15-1.5	1.5	33
	RSHS1.4-15-3	3	44	85		RAHS1.4-15-3	3	22
	RSHS1.4-15-6	6	34	64		RAHS1.4-15-6	6	16
	RSHS1.4-15-12	12	28	54		RAHS1.4-15-12	12	13
18"	RSHS1.4-18-1.5	1.5	74	146	18"	RAHS1.4-18-1.5	1.5	38
	RSHS1.4-18-3	3	49	96		RAHS1.4-18-3	3	25
	RSHS1.4-18-6	6	38	71		RAHS1.4-18-6	6	18
	RSHS1.4-18-12	12	30	58		RAHS1.4-18-12	12	14
24"	RSHS1.4-24-1.5	1.5	93	184	24"	RAHS1.4-24-1.5	1.5	47
	RSHS1.4-24-3	3	61	117		RAHS1.4-24-3	3	30
	RSHS1.4-24-6	6	45	85		RAHS1.4-24-6	6	22
	RSHS1.4-24-12	12	35	67		RAHS1.4-24-12	12	17
30"	RSHS1.4-30-1.5	1.5	113	223	30"	RAHS1.4-30-1.5	1.5	57
	RSHS1.4-30-3	3	72	139		RAHS1.4-30-3	3	36
	RSHS1.4-30-6	6	53	98		RAHS1.4-30-6	6	26
	RSHS1.4-30-12	12	40	77		RAHS1.4-30-12	12	19

4 in., 4 1/2 in., 8 in. and 9 in. spacing also available.

**24  
HOUR  
Ship**

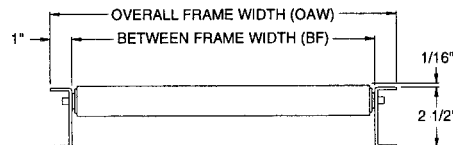
## Gravity Roller Curve Conveyor

1 3/8 in. dia. x 18 ga. Rollers



Model RSHC

1-3/8 in. dia. Gravity Roller Curve Conveyors are compatible with straight sections, providing flexibility to your conveyor line. They are ideal for carrying lightweight packages.



- 5 Widths
- Steel or Aluminum Frames
- 45° and 90° Curves
- Hooks and Rods on Ends

### Standard Specifications:

**Frame** - 2 1/2 in. deep x 1 in. flange x 12 ga. galvanized steel or 1/8 in. aluminum channel with bolt-in cross members.

**Widths** - 12 in., 15 in., 18 in., 24 in. and 30 in. overall.

**Curves** - 45° and 90° with 48 in. outside radius for 12 in., 15 in. and 18 in. widths and 60 in. outside radius for 24 in. and 30 in. widths.

**Couplings** - Hooks and rods on both ends of curve.

**Rollers** - 1 3/8 in. dia. x 18 ga. galvanized steel or heat-treated aluminum tubing. Oiled ball bearings both ends.

**Axles** - 1/4 in. dia. spring retained axle spaced on 3 in. equivalent centers. 1 1/2 in. equivalent roller centers available on 12 in. and 24 in. widths.

**Capacity** - Same "Per Foot" capacity as straight sections.

1 3/8 in. ROLLER CURVE CONVEYOR								
Steel Frames					Aluminum Frames			
Overall Width	Model No.	Roller Centers	Weight (lbs.)		Overall Width	Model No.	Roller Centers	Weight (lbs.)
			45°	90°				
12"	RSHC1.4-12-1.5	1.5	29	58	12"	RAHC1.4-12-1.5	1.5	16
	RSHC1.4-12-3	3	22	42		RAHC1.4-12-3	3	11
15"	RSHC1.4-15-3	3	24	47	15"	RAHC1.4-15-3	3	13
	RSHC1.4-18-3	3	27	49		RAHC1.4-18-3	3	14
24"	RSHC1.4-24-1.5	1.5	51	102	24"	RAHC1.4-24-1.5	1.5	26
	RSHC1.4-24-3	3	35	69		RAHC1.4-24-3	3	18
30"	RSHC1.4-30-3	3	41	76	30"	RAHC1.4-30-3	3	21

**24  
HOUR  
Ship**

## Gravity Roller Conveyor

### 1.9 in. dia. x 16 ga. Rollers

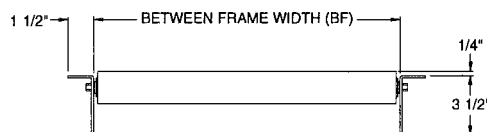
1.9 in. dia. Gravity Roller Conveyors, used in permanent installations, provide an economical means of carrying light to medium weight packages. Compatible with curves, they provide flexibility to your conveyor line.

**Model  
GPHS1.9x16**



- 6 Between Frame Widths
- Galvanized Steel Frames

- 5 ft. and 10 ft. Sections
- 8 Roller Centers



LOAD CAPACITY CHART		
Support Centers	Frame Capacity	Roller Capacity
	Max. Uniformly Dist. Load	Max. Load Per Roller
5' 0"	3300 lbs.	260 lbs.
10' 0"	1200 lbs.	

#### Standard Specifications:

**Frame** - 3 1/2 in. deep x 1 1/2 in. flange x 10 ga. galvanized steel channel with bolt-in cross members.

**Between Frame Widths** - 14 in., 18 in., 22 in., 26 in., 32 in. and 38 in. between frames.

**End Couplers** - Bolt-on type for bolting sections together.

**Lengths** - 5 ft. and 10 ft. straight sections.

**Rollers** - 1.9 in. dia. x 16 ga. galvanized steel tubing. Grease packed ball bearings both ends.

**Axles** - 7/16 in. spring retained hex axle spaced on 2 in., 3 in., 4 in., 4 1/2 in., 6 in., 8 in., 9 in. and 12 in. centers.

1.9 in. ROLLER CONVEYOR									
1.9 in. dia. x 16 ga. Rollers					1.9 in. dia. x 16 ga. Rollers				
Between Frame Width	Model No.	Roller Centers	Weight (lbs.)		Between Frame Width	Model No.	Roller Centers	Weight (lbs.)	
			5' 0"	10' 0"				5' 0"	10' 0"
14"	GPHS1.9x16-14-2	2	109	217	26"	GPHS1.9x16-26-2	2	166	331
	GPHS1.9x16-14-3	3	84	167		GPHS1.9x16-26-3	3	123	245
	GPHS1.9x16-14-4.5	4.5	67	134		GPHS1.9x16-26-4.5	4.5	93	189
	GPHS1.9x16-14-6	6	59	117		GPHS1.9x16-26-6	6	80	159
18"	GPHS1.9x16-18-2	2	128	255	32"	GPHS1.9x16-32-2	2	194	388
	GPHS1.9x16-18-3	3	97	193		GPHS1.9x16-32-3	3	142	284
	GPHS1.9x16-18-4.5	4.5	75	153		GPHS1.9x16-32-4.5	4.5	106	216
	GPHS1.9x16-18-6	6	66	131		GPHS1.9x16-32-6	6	90	180
22"	GPHS1.9x16-22-2	2	147	293	38"	GPHS1.9x16-38-2	2	223	445
	GPHS1.9x16-22-3	3	110	219		GPHS1.9x16-38-3	3	162	323
	GPHS1.9x16-22-4.5	4.5	84	171		GPHS1.9x16-38-4.5	4.5	119	243
	GPHS1.9x16-22-6	6	73	145		GPHS1.9x16-38-6	6	101	201

4 in., 8 in., 9 in. and 12 in. spacing also available.

**24  
HOUR  
Ship**

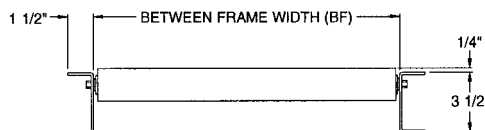
## Gravity Roller Curve Conveyor

### 1.9 in. dia. x 16 ga. Rollers

1.9 in. dia. Gravity Roller Curve Conveyors are for use in permanent installations to carry medium weight packages. They are compatible with straight sections, providing flexibility to your conveyor line.



**Model GPHC1.9x16**



- 6 Between Frame Widths
- Galvanized Steel Frames
- 45° and 90° Curves

1.9 in. ROLLER CURVE CONVEYOR					
1.9 in. dia. x 16 ga. Rollers					
Between Frame Width	Inside Radius	Rollers per 90° Curve	Model No.	Weight (lbs.)	
				45°	90°
14"	32 1/2"	22	GPHC1.9x16-14-3	55	94
18"	32 1/2"		GPHC1.9x16-18-3	64	111
22"	32 1/2"		GPHC1.9x16-22-3	72	127
26"	32 1/2"	36	GPHC1.9x16-26-3	80	144
32"	48"		GPHC1.9x16-32-3	127	258
38"	48"		GPHC1.9x16-38-3	146	295

#### Standard Specifications:

**Frame** - 3 1/2 in. deep x 1 1/2 in. flange x 10 ga. galvanized steel channel with bolt-in cross members.

**Between Frame Widths** - 14 in., 18 in., 22 in., 26 in., 32 in. and 38 in. between frames.

**Curves** - 45° and 90° with 32 1/2 in. inside radius for 14 in., 18 in., 22 in. and 26 in. widths and 48 in. inside radius for 32 in. and 38 in. widths.

**End Couplers** - Bolt-on type for bolting sections together.

**Rollers** - 1.9 in. dia. x 16 ga. galvanized steel tubing. Grease packed ball bearings both ends.

**Axles** - 7/16 in. spring retained hex axle spaced on 3 in. equivalent centers.

**Capacity** - Same "Per Foot" capacity as straight sections.



**24  
HOUR  
Ship**

## Gravity Roller Conveyor 2 1/2 in. dia. x 11 ga. Rollers

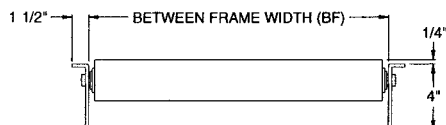
2 1/2 in. dia. Gravity Roller Conveyors are used in permanent installations. They provide an economical means of carrying medium to heavy weight packages.

**Model  
GUHS2.5x11**



- 6 Between Frame Widths
- Painted Steel Frames

- 5 ft. and 10 ft. Sections
- 6 Roller Centers



LOAD CAPACITY CHART		
Support Centers	Frame Capacity Max. Uniformly Dist. Load	Roller Capacity Max. Load Per Roller
5' 0"	5200 lbs.	650 lbs.
10' 0"	2100 lbs.	

### Standard Specifications:

**Frame** - 4 in. deep x 1 1/2 in. flange x 7 ga. steel channel with bolt-in cross members. Painted Omni Blue.

**Between Frame Widths** - 14 in., 18 in., 22 in., 26 in., 32 in. and 38 in. between frames.

**End Couplers** - Bolt-on type for bolting sections together.

**Lengths** - 5 ft. and 10 ft. straight sections.

**Rollers** - 2 1/2 in. dia. x 11 ga. steel tubing. Grease packed ball bearings both ends.

**Axles** - 11/16 in. spring retained hex axle spaced on 3 in., 4 in., 6 in., 8 in., 9 in. and 12 in. centers.

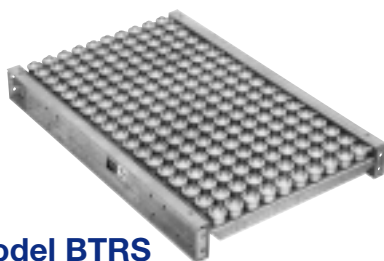
2 1/2 in. ROLLER CONVEYOR									
2 1/2 in. dia. x 11 ga. Rollers					2 1/2 in. dia. x 11 ga. Rollers				
Between Frame Width	Model No.	Roller Centers	Weight (lbs.)		Between Frame Width	Model No.	Roller Centers	Weight (lbs.)	
			5' 0"	10' 0"				5' 0"	10' 0"
14"	GUHS2.5x11-14-3	3	175	350	26"	GUHS2.5x11-26-3	3	268	536
	GUHS2.5x11-14-4	4	143	286		GUHS2.5x11-26-4	4	214	428
	GUHS2.5x11-14-6	6	118	228		GUHS2.5x11-26-6	6	171	330
	GUHS2.5x11-14-8	8	98	196		GUHS2.5x11-26-8	8	139	276
18"	GUHS2.5x11-18-3	3	205	409	32"	GUHS2.5x11-32-3	3	315	629
	GUHS2.5x11-18-4	4	166	331		GUHS2.5x11-32-4	4	250	499
	GUHS2.5x11-18-6	6	135	261		GUHS2.5x11-32-6	6	198	382
	GUHS2.5x11-18-8	8	111	222		GUHS2.5x11-32-8	8	159	317
22"	GUHS2.5x11-22-3	3	236	472	38"	GUHS2.5x11-38-3	3	361	722
	GUHS2.5x11-22-4	4	190	379		GUHS2.5x11-38-4	4	285	570
	GUHS2.5x11-22-6	6	153	296		GUHS2.5x11-38-6	6	221	433
	GUHS2.5x11-22-8	8	125	249		GUHS2.5x11-38-8	8	179	357

9 in. and 12 in. spacing also available.

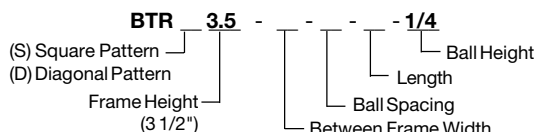
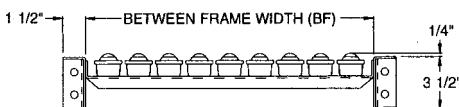
**24  
HOUR  
Ship**

## Ball Transfer Tables

Ball Transfer Tables are used where products are required to manually rotate or move in any direction. They are compatible with 1.9 in. dia. Gravity Roller Conveyors, Line Shaft Conveyors and Belt Conveyors.



**Model BTRS**



- 6 Between Frame Widths
- 4 Ball Centers
- Square or Diagonal Patterns

### Standard Specifications:

**Frame** - 3 1/2 in. deep x 1 1/2 in. flange x 10 ga. galvanized steel channel with bolt-in 10 ga. pans.

**Between Frame Widths** - 14 in., 18 in., 22 in., 26 in., 32 in. and 38 in. between frames.

**End Couplers** - Bolt-on type for bolting sections together.

**Lengths** - 2 ft. through 10 ft. in 6 in. increments.

**Balls** - 1 in. dia. ball transfers.

**Spacing** - Square centers of 2 in., 4 in. and 6 in. Nominal diagonal centers of 3 in. and 6 in.

LOAD CAPACITY CHART		
Support Centers	Frame Capacity Max. Uniformly Dist. Load	Ball Capacity* Max. Load Per Ball
5' 0"	3300 lbs.	50 lbs.
10' 0"	1200 lbs.	

\* Maximum product weight should not exceed 150 lbs. as product may only rest on 3 ball transfers at one time.

BALL TRANSFER TABLE					
Weight per foot (lbs.)					
Between Frame Width	2" Centers Square	3" Centers Diagonal	4" Centers Square	6" Centers Square	6" Centers Diagonal
14"	29	23	21	--	--
18"	36	27	24	21	21
22"	43	31	27	23	23
26"	50	36	31	27	27
32"	60	43	36	31	31
38"	70	50	41	35	35

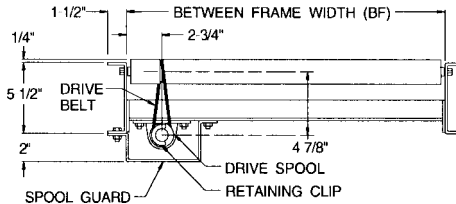
**24  
HOUR  
Ship**

## Lineshaft Conveyor 1.9 in. dia. x 16 ga. Rollers

Lineshaft Conveyors are live roller conveyors capable of accumulating products with minimum back pressure. They are also quiet-running and require minimal maintenance.



**Model LSDS**



- 6 Between Frame Widths
- Minimum Pressure Accumulation
- Single Drive Powers Several Feet of Conveyor

### Standard Specifications:

**Frame** - 5 1/2 in. deep x 12 ga. galvanized steel channel with bolt-in cross members and end caps.

**Between Frame Widths** - 14 in., 18 in., 22 in., 26 in., 32 in. and 38 in. between frames.

**Lengths** - 3 ft. drive section; 5 ft., 7 ft. and 10 ft. slaved sections.

**Rollers** - 1.9 in. dia. x 16 ga. galvanized rollers with 7/16 in. spring retained hex axle. Grease packed ball bearings both ends. Spaced on 3 in. centers.

**Floor Supports** - Adjustable 36 in. to 48 in. top of rollers.

**\*Drive** - 1/2 HP - 230/460V - 3 Phase - 60 Hz. - TEFC with "C" face speed reducer mounted beneath 3 ft. drive section.

\*Good for a maximum 40'-0" long conveyor.

LOAD CAPACITY CHART			
Support Centers	Frame Capacity		Roller Capacity
	Max. Uniformly Dist. Load	Max. Load Per Roller	
5' 0"	5500 lbs.		
10' 0"	2400 lbs.	15 lbs.	

1.9 in. LINESHAFT CONVEYOR						
1.9 in. dia. x 16 ga. Rollers						
Between Frame Width	3 ft. Drive Section	10 ft. Drive Section	Model No.*	Weight (lbs.)		
				5' 0"	7' 0"	10' 0"
14"	137	292	LSSS1.9x16-14-3	119	162	229
18"	147	320	LSSS1.9x16-18-3	132	180	254
22"	157	348	LSSS1.9x16-22-3	146	198	280
26"	168	376	LSSS1.9x16-26-3	159	216	306
32"	183	418	LSSS1.9x16-32-3	180	244	345
38"	198	460	LSSS1.9x16-38-3	199	271	384

\* Model No. above reflects slaved sections only. To specify the 3 ft. drive section use Model No. LSDS1.9 x 16 - BF - 3 - 3.

**Drive Shaft** - 1 in. dia. steel with Delrin spools, spacer clips and 3/16 in. dia. urethane drive belts as required.

**Spool Guard** - Encloses underside of drive shaft, spools and drive belts for full length of conveyor.

**Conveying Speed** - Constant 60 FPM.

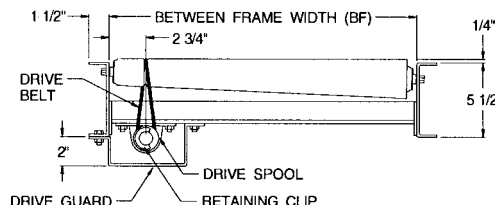
**24  
HOUR  
Ship**

## Lineshaft Curve Conveyor 2 1/2" to 1 11/16" x 14 ga. Tapered Rollers

Lineshaft Curves are slave driven from lineshaft straight sections and allow for turns in the conveyor line. They are also quiet-running and require minimal maintenance.



**Model LSSC**



- 6 Between Frame Widths
- 45° and 90° Curves
- Slave Driven From Straights

### Standard Specifications:

**Frame** - 5 1/2 in. deep x 12 ga. galvanized steel channel with bolt-in cross members and end caps. Outside rail has "triple-punched" hex holes to allow skewing of rollers to affect product tracking.

**Between Frame Widths** - 14 in., 18 in., 22 in., 26 in., 32 in. and 38 in. between frames.

**Curves** - 45° and 90° curves have a 36 in. inside radius.

**Rollers** - 2 1/2 in. dia. tapered to 1 11/16 in. x 14 ga. zinc plated rollers. Grease packed ball bearings. Spaced on 3 in. centers along the centerline.

**Floor Supports** - Adjustable 36 in. to 48 in. top of roller.

**Slave Driven** - Curves are slaved from drive shaft of straight section. Shafts coupled by Delrin chain coupling at bed joints.

1.9 in. LINESHAFT CURVE CONVEYOR							
2 1/2 in. dia. to 1 11/16 in. dia. x 14 ga. Tapered Rollers							
Between Frame Width	Model No.	Weight (lbs.)		Between Frame Width	Model No.	Weight (lbs.)	
		45°	90°			45°	90°
14"	LSSC1.9x16-14-3	92	199	26"	LSSC1.9x16-26-3	119	254
18"	LSSC1.9x16-18-3	101	218	32"	LSSC1.9x16-32-3	133	282
22"	LSSC1.9x16-22-3	110	236	38"	LSSC1.9x16-38-3	147	309

**Drive Shaft** - 1 in. dia. steel with Delrin spools, clips, 3/16 in. urethane drive belts and universal joints as required.

**Spool Guard** - Encloses underside of drive shaft, spools and drive belts.

**Capacity** - Same "Per Foot" capacity as straight sections.

Slider Bed Belt Conveyors provide a versatile means of handling products of various sizes and shapes. Applications include assembly lines, sorting, inspection or simply transportation.



**Model BHSE**  
(pictured)

**Model BHSC - Center Drive**  
(not pictured)



### Standard Specifications:

**Belt** - Black PVC-120 with clipper lacing.

**Bed** - 3 1/2 in. deep x 12 ga. galvanized steel slider bed. Standard 5 ft. and 10 ft. long bolt-together sections with bolt-on end couplers.

**Floor Supports** - Adjustable 33 7/8 in. to 38 1/8 in. top of belt.

**Drive** - 1/2 HP to 2 HP - 230/460V - 3 Phase - 60 Hz. - TEFC with sealed worm gear "C" face speed reducer as required.

**Drive Pulley** - 4 in. dia. with 1 3/16 in. dia. shaft or 8 in. dia. with 1 7/16 in. dia. shaft, crowned and fully lagged.

**Tail Pulley** - 4 in. dia. with 1 3/16 in. dia. shaft, crowned.

**Take-Up** - Provides belt take-up at tail pulley to allow for future belt stretch.

**Conveying Speed** - Constant 60 FPM.

**NOTE:** A short belt segment laced on both ends, commonly called a "dutchman", is provided with end driven conveyors over 47 ft. OAL.

HP	Belt Width		
	12" - 18"	20" - 24"	30" - 36"
1/2	250 lbs.	160 lbs.	- -
3/4	500 lbs.	390 lbs.	180 lbs.
1	740 lbs.	640 lbs.	420 lbs.
1 1/2	1230 lbs.*	1090 lbs.*	910 lbs.
2	1680 lbs.*	1580 lbs.*	- -

\* 8 in. dia. drive pulley in lieu of 4 in. dia. drive pulley

- 5 ft. and 10 ft. Intermediate Sections
- Bolt-Together Construction
- Supported at Every Bed Joint

Overall Length	BW	Weight (lbs.)						
		12"	16"	18"	20"	24"	30"	36"
7' 0"	4" Dia. Drive Pulley	325	369	386	403	434	- -	- -
12' 0"		403	458	482	505	547	615	800
17' 0"		481	547	577	606	660	746	974
22' 0"		559	636	672	708	773	877	1148
27' 0"	4" Dia. Drive Pulley	636	725	768	810	886	1008	1322
32' 0"		714	814	863	911	999	1140	1496
37' 0"		792	903	958	1013	1112	1271	1669
42' 0"		870	992	1053	1114	1225	1401	1843
47' 0"	4" Dia. Drive Pulley	947	1081	1149	1216	1338	1533	2017
52' 0"		1025	1170	1244	1318	1451	1664	2191
57' 0"		1174	1288	1370	1452	1600	1822	2361
62' 0"		1252	1377	1466	1554	1713	1952	2535
67' 0"	8" Dia. Drive Pulley	1330	1466	1561	1656	1826	2083	2709
72' 0"		1407	1555	1656	1757	1939	2213	2882
77' 0"		1485	1644	1752	1859	2052	2343	3056
82' 0"		1563	1733	1847	1961	2165	2473	3230
87' 0"	8" Dia. Drive Pulley	1641	1822	1942	2062	2278	2603	3404
92' 0"		1718	1911	2038	2164	2391	2733	3578
97' 0"		1796	2001	2134	2266	2504	2863	3751
102' 0"		1874	2090	2229	2367	2617	2993	3925

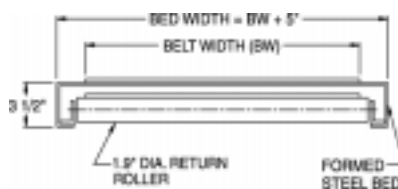
\* 10 ga. galvanized slider bed

Roller Bed Belt Conveyors provide a versatile means of handling products of various sizes and shapes. Roller bed design provides for increased capacity with lower power requirements.



**Model BHRE**  
(pictured)

**Model BHRC - Center Drive**  
(not pictured)



### Standard Specifications:

**Belt** - Black PVC-120 with clipper lacing.

**Bed** - Roller bed with 1.9 in. dia. x 16 ga. rollers spaced every 6 inches. Mounted in 5 1/2 in. deep x 12 ga. galvanized steel channel frames. Standard 5 ft. and 10 ft. long bolt-together sections with bolt-on end couplers.

**Floor Supports** - Adjustable 32 1/8 in. to 38 1/8 in. top of belt.

**Drive** - 1/3 HP to 2 HP - 230/460V - 3 Phase - 60 Hz. - TEFC with sealed worm gear "C" face speed reducer as required.

**Drive Pulley** - 4 in. dia. with 1 3/16 in. dia. shaft or 8 in. dia. with 1 7/16 in. dia. shaft, crowned and fully lagged.

**Tail Pulley** - 4 in. dia. with 1 3/16 in. dia. shaft, crowned.

**Take-Up** - Provides belt take-up at tail pulley to allow for future belt stretch.

**Conveying Speed** - Constant 60 FPM.

**NOTE:** A short belt segment laced on both ends, commonly called a "dutchman", is provided with end driven conveyors over 47 ft. OAL.

HP	Belt Width		
	12" - 18"	20" - 24"	30" - 36"
1/3	1300 lbs.	1100 lbs.	700 lbs.
1/2	2300 lbs.	2100 lbs.	1700 lbs.
3/4	3800 lbs.	3600 lbs.	3200 lbs.
1	5200 lbs.	5000 lbs.	4600 lbs.
1 1/2	8200 lbs.	7950 lbs.	7550 lbs.
2	11000 lbs.*	10800 lbs.*	- -

\* 8 in. dia. drive pulley in lieu of 4 in. dia. drive pulley

- 5 ft. and 10 ft. Intermediate Sections
- Bolt-Together Construction
- Supported at Every Bed Joint

Overall Length	BW	Weight (lbs.)						
		12"	16"	18"	20"	24"	30"	36"
7' 0"	4" Dia. Drive Pulley	389	418	435	452	482	- -	- -
12' 0"		475	515	538	561	602	669	801
17' 0"		561	612	641	670	722	807	955
22' 0"		647	709	745	780	842	944	1109
27' 0"	4" Dia. Drive Pulley	734	806	848	889	962	1082	1263
32' 0"		820	904	951	998	1082	1219	1417
37' 0"		906	1001	1054	1107	1202	1357	1570
42' 0"		992	1098	1157	1216	1322	1494	1724
47' 0"	4" Dia. Drive Pulley	1079	1195	1261	1326	1442	1632	1878
52' 0"		1165	1292	1364	1435	1562	1769	2032
57' 0"		1241	1383	1461	1538	1679	1906	2138
62' 0"		1327	1480	1564	1647	1799	2043	2292
67' 0"	8" Dia. Drive Pulley	1413	1577	1667	1756	1919	2181	2446
72' 0"		1499	1674	1770	1865	2039	2318	2599
77' 0"		1586	1771	1873	1974	2159	2456	2753
82' 0"		1672	1868	1976	2084	2279	2593	2907
87' 0"	8" Dia. Drive Pulley	1758	1966	2080	2193	2399	2731	3061
92' 0"		1844	2063	2183	2302	2519	2868	3214
97' 0"		1931	2160	2286	2411	2639	3006	3368
102' 0"		2017	2257	2389	2520	2759	3143	3522

**24  
HOUR  
Ship**

## Belt Driven Live Roller Conveyor Transportation Type

Belt Driven Live Roller Conveyors provide a versatile means of transporting products of various sizes and shapes. The tread roller is driven by a belt which is forced against the tread rollers by pressure rollers.



**Model BDRE-T**

### Standard Specifications:

**Belt** - PVC-120 with hidden clipper lacing.

**Bed** - Roller bed with 1.9 in. dia. x 16 ga.

"pop-out" galvanized steel tread rollers spaced on 3 in. centers.

Mounted in 6 1/2 in. deep x 1 1/2 in. x 12 ga. galvanized steel channel frames.

Standard 5 ft. and 10 ft. long bolt-together sections with bolt-on end couplers.

**Floor Supports** - Adjustable 34 1/2 in. to 39 in. top of belt.

**Drive** - 1/2 HP to 2 HP - 230/460V - 3 Phase - 60 Hz. - TEFC with sealed worm gear

"C" face speed reducer as required.

**Drive Pulley** - 4 in. dia. with 1 3/16 in. dia. shaft or 8 in.

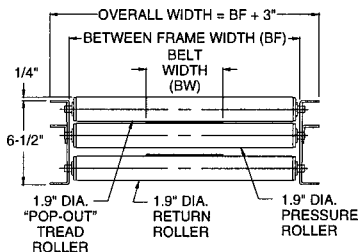
dia. with 1 7/16 in. dia. shaft, crowned and fully lagged.

**Tail Pulley** - 4 in. dia. with 1 3/16 in. dia. shaft, crowned.

**Take-Up** - Provides belt take-up at tail pulley to allow for future belt stretch.

**Conveying Speed** - Constant 60 FPM.

NOTE: A short belt segment laced on both ends, commonly called a "dutchman", is provided with end driven conveyors over 47 ft. OAL.



- 5 ft. and 10 ft. Intermediate Sections
- Bolt-Together Construction
- Supported at Every Bed Joint

TRANSPORTATION TYPE BDLR CONVEYOR									
Overall Length	Weight (lbs.)								
	BF	14"	18"	22"	26"	32"	38"		
7' 0"	255	292	330	368	424	481			
12' 0"	382	440	497	556	642	730			
17' 0"	511	589	667	745	862	979			
22' 0"	639	737	835	933	1080	1227			
27' 0"	768	886	1004	1122	1300	1477			
32' 0"	896	1034	1172	1309	1518	1725			
37' 0"	1025	1183	1342	1499	1737	1975			
42' 0"	1153	1331	1509	1686	1955	2223			
47' 0"	1282	1480	1679	1876	2175	2473			
52' 0"	1409	1628	1847	2063	2393	2721			
57' 0"	1546	1784	2021	2257	2615	2970			
62' 0"	1674	1931	2189	2444	2833	3218			
67' 0"	1803	2081	2359	2634	3052	3468			
72' 0"	1931	2229	2526	2821	3270	3716			
77' 0"	2060	2378	2696	3010	3490	3966			
82' 0"	2187	2526	2864	3198	3708	4214			
87' 0"	2317	2675	3033	3387	3928	4464			
92' 0"	2444	2823	3201	3575	4146	4711			
97' 0"	2574	2972	3371	3764	4365	4961			
102' 0"	2701	3120	3538	3952	4583	5209			

LOAD CAPACITY CHART for 52' BDRE				
HP	Between Frames			
	14" - 18"	22" - 26"	32" - 38"	
1/2	350 lbs.	100 lbs.	-	
3/4	1080 lbs.	840 lbs.	440 lbs.	
1	1820 lbs.	1550 lbs.	1130 lbs.	
1 1/2	3250 lbs.	3000 lbs.	2600 lbs.	
2	4700 lbs.	4450 lbs.	4050 lbs.	

**24  
HOUR  
Ship**

## Belt Driven Live Roller Conveyor Minimum Pressure Accumulation Type

Minimum Pressure Type Belt Driven Live Roller Conveyors provide an inexpensive means of accumulating products with minimum back pressure. Driving force is attained via adjustable spring pressure on pressure rollers.



**Model BDRE-M**

### Standard Specifications:

**Belt** - PVC-120 with hidden clipper lacing.

**Bed** - Roller bed with 1.9 in. dia. x 16 ga. "pop-out"

galvanized steel tread rollers spaced on 3 in. centers.

Mounted in 6 1/2 in. deep x 1 1/2 in. x 12 ga. galvanized steel channel frames.

Standard 5 ft. and 10 ft. long bolt-together sections with bolt-on end couplers.

**Floor Supports** - Adjustable 34 1/2 in. to 39 in. top of belt.

**Drive** - 1/2 HP to 2 HP - 230/460V - 3 Phase - 60 Hz. - TEFC with sealed worm gear

"C" face speed reducer as required.

**Drive Pulley** - 4 in. dia. with 1 3/16 in. dia. shaft or 8 in.

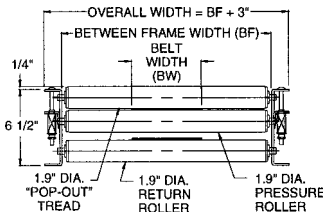
dia. with 1 7/16 in. dia. shaft, crowned and fully lagged.

**Tail Pulley** - 4 in. dia. with 1 3/16 in. dia. shaft, crowned.

**Take-Up** - Provides belt take-up at tail pulley to allow for future belt stretch.

**Conveying Speed** - Constant 60 FPM.

NOTE: A short belt segment laced on both ends, commonly called a "dutchman", is provided with end driven conveyors over 47 ft. OAL.



- 5 ft. and 10 ft. Intermediate Sections
- Bolt-Together Construction
- Supported at Every Bed Joint

MINIMUM PRESSURE TYPE BDLR CONVEYOR									
Overall Length	Weight (lbs.)								
	BF	14"	18"	22"	26"	32"	38"		
7' 0"	256	293	331	369	426	482			
12' 0"	384	441	499	557	644	731			
17' 0"	514	592	669	747	865	981			
22' 0"	642	740	838	936	1030	1230			
27' 0"	772	890	1008	1126	1303	1480			
32' 0"	900	1038	1176	1314	1522	1729			
37' 0"	1030	1188	1347	1504	1742	1979			
42' 0"	1158	1336	1515	1692	1961	2228			
47' 0"	1288	1487	1685	1882	2181	2478			
52' 0"	1416	1635	1853	2070	2400	2727			
57' 0"	1553	1791	2028	2263	2622	2977			
62' 0"	1681	1939	2196	2452	2840	3226			
67' 0"	1811	2089	2367	2642	3061	3476			
72' 0"	1939	2237	2535	2830	3279	3725			
77' 0"	2069	2387	2705	3020	3499	3975			
82' 0"	2197	2535	2874	3208	3718	4224			
87' 0"	2327	2686	3044	3398	3938	4474			
92' 0"	2455	2834	3212	3586	4157	4723			
97' 0"	2585	2984	3382	3776	4377	4973			
102' 0"	2713	3132	3551	3964	4596	5221			

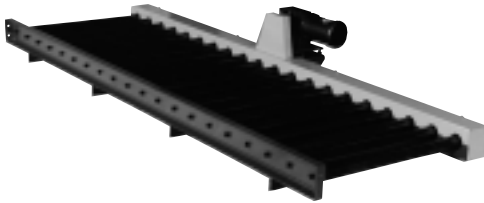
LOAD CAPACITY CHART for 52' BDRE				
HP	Between Frames			
	14" - 18"	22" - 26"	32" - 38"	
1/2	350 lbs.	100 lbs.	-	
3/4	1080 lbs.	840 lbs.	440 lbs.	
1	1820 lbs.	1550 lbs.	1130 lbs.	
1 1/2	3250 lbs.	3000 lbs.	2600 lbs.	
2	4700 lbs.	4450 lbs.	4050 lbs.	



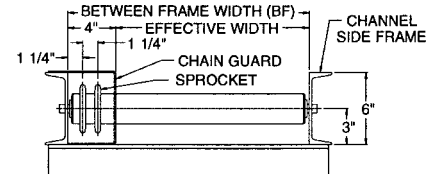
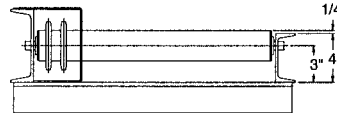
**24  
HOUR  
Ship**

## Chain Driven Live Roller Conveyor

Chain Driven Live Roller Conveyors are ideal for transporting loaded pallets, tires, drums, etc. Each roller has two sprockets welded to it and is slaved by an adjacent roller.



- 2 Effective Widths - 36 in. or 54 in.
- 2 1/2 in. dia. x 11 ga. Rollers
- 4 1/2 in. or 6 in. Roller Centers
- 1/2 and 3/4 HP Drive Packages



### Standard Specifications:

**Frame** - 6 in. x 8.2 lb. channel for rollers set low both sides or 6 in. x 8.2 lb. channel and 4 in. x 5.4 lb. channel for high/low combination. Rollers spaced on 4 1/2 in. or 6 in. centers. Standard 10 ga. chain guard.

**Effective Widths** - 36 in. and 54 in. effective widths.

**Rollers** - 2 1/2 in. x 11 ga. tube with 1 1/16 in. dia. pin retained hex axle, sealed grease-packed bearings, 60A15 sprockets welded to tube. Maximum capacity per roller equals 580 lbs.

**Floor Supports** - Bolt-on 4 in. x 5.4 lb. channel legs. Adjustable 24 - 30 in.,

27 - 33 in. or 30 - 36 in. top of roller (TOR).

**Drive** - 1/2 and 3/4 HP - 230/460V - 3 Ph. - 60 hz. - TEFC. Right angle sealed worm gear "C" face speed reducer. Standard side high or side low mount.

**Conveying Speed** - Constant 30 FPM.

LOAD CAPACITY CHART 54" EFFECTIVE WIDTH				
HP @ 30 FPM	4-1/2" Roller Spacing		6" Roller Spacing	
	Actual Length	Max. Product Weight*	Actual Length	Max. Product Weight*
1/2	4'-10 1/2"	2758	5'-0"	2482
1/2	9'-9"	2615	10'-0"	2387
1/2	19'-6"	2334	20'-0"	2196
3/4	29'-3"	2050	30'-0"	2006
3/4	39'-0"	1768	40'-0"	1815

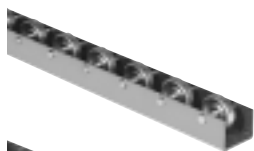
CHAIN DRIVEN LIVE ROLLER CONVEYOR		
Weight (lbs.) for 4-1/2" spacing		
Nominal Length*	36" Effective Width	54" Effective Width
5'-0"	437	531
10'-0"	871	1060
15'-0"	1308	1591
20'-0"	1742	2120
25'-0"	2179	2651
30'-0"	2613	3180
25'-0"	3050	3711
30'-0"	3484	4240
Deduct per foot for 6" Spacing:	13.1	17.0

24 Hour Ship Products

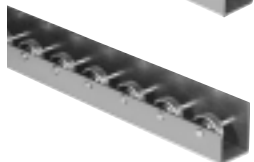
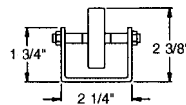
**24  
HOUR  
Ship**

## Flow Rail

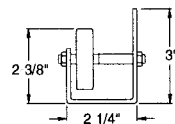
Flow Rails are ideal for conveying lightweight packages when two or more sections are placed side by side. They are often used in gravity storage racks and can be used to guide packages.



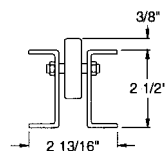
Style #1



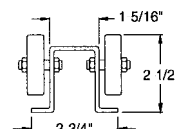
Style #2



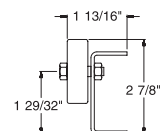
Style #3



Style #4



Style #5



- 1 15/16 in. dia. Wheels
- Bolt-Together Construction
- Available in 10 ft. Lengths
- Style #4 Available With Wheels Staggered

FLOWRAIL (Light Duty)					
Model Number	Wheel Description	Style	Spacing	Length	Weight (lbs.)
FRWL1.94-1-3-10	In Line	1	3"	10' 0"	30
FRWL1.94-2-3-10	In Line	2	3"	10' 0"	34
FRWL1.94-3-3-10	In Line	3	3"	10' 0"	39
FRWS1.94-4-3-10	Staggered	4	3"	10' 0"	26
FRWP1.94-4-3-10	Paired	4	3"	10' 0"	37
FRWP1.94-5-3-10	In Line	5	3"	10' 0"	24

### Standard Specifications:

**Frame** - Style #1, #2, #3 and #5 frames are constructed of 12 ga. galvanized formed steel. Style #4 is constructed of 14 ga. galvanized formed steel channel.

**Wheels** - 1 15/16 in. dia. wheels spaced on 3 in. centers.

Leg Supports are designed for the temporary or permanent support of conveyor sections. They are available in several sizes and styles to accommodate various conveyor types and loads.



Model TSTD

### TRIPOD LEG SUPPORT

- T-Widths available in sizes 9 3/4 in., 15 3/4 in. and 21 3/4 in. for all top of leg heights. Painted Omni Blue.
- For Skatwheel Conveyor and 1 3/8 in. dia. Gravity Roller Conveyor.

TRIPOD LEG SUPPORTS	
Model Number	Top of Leg Adjustments
TSTD T-Width -11-17	11" - 17"
TSTD T-Width -17-29	17" - 29"
TSTD T-Width -23-39	23" - 39"
TSTD T-Width -29-51	29" - 51"
TSTD T-Width -39-71	39" - 71"



Model LHST

### LIGHT DUTY "H" TYPE LEG SUPPORT (Bolt-Together Construction)

- Light duty bolt-together leg supports are constructed of 3 in. formed channel (Galvanized).
- For Skatwheel Conveyor and 1 3/8 in. dia. Gravity Roller Conveyor.

"H" TYPE LEG SUPPORT (Light Duty)	
Model Number	Top of Leg Adjustments
LHST "BF"-12.25-16.25	12.25" - 16.25"
LHST "BF"-14.25-20.25	14.25" - 20.25"
LHST "BF"-18.25-24.25	18.25" - 24.25"
LHST "BF"-22.25-28.25	22.25" - 28.25"
LHST "BF"-26.25-32.25	26.25" - 32.25"
LHST "BF"-30.25-42.25	30.25" - 42.25"
LHST "BF"-38.25-50.25	38.25" - 50.25"



Model MHST

### MEDIUM DUTY "H" TYPE LEG SUPPORT (Bolt-Together Construction)

- Medium duty bolt-together leg supports are constructed of 3 in. formed channel (Galvanized).
- For 1.9 in. dia. Gravity Roller Conveyor, Line Shaft Conveyor, Belt Conveyor and Belt Driven Live Roller Conveyor.

"H" TYPE LEG SUPPORT (Med. Duty)	
Model Number	Top of Leg Adjustments
MHST "BF"-12.25-16.25	12.25" - 16.25"
MHST "BF"-14.25-20.25	14.25" - 20.25"
MHST "BF"-18.25-24.25	18.25" - 24.25"
MHST "BF"-22.25-28.25	22.25" - 28.25"
MHST "BF"-26.25-32.25	26.25" - 32.25"
MHST "BF"-30.25-42.25	30.25" - 42.25"
MHST "BF"-38.25-50.25	38.25" - 50.25"



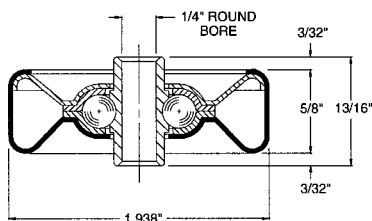
Model HHST

### HEAVY DUTY "H" TYPE LEG SUPPORT (Bolt-Together Construction)

- Heavy duty bolt-together leg supports are constructed of 3 in. formed channel. Painted Omni Blue.
- For 2.5 in. dia. Gravity Roller Conveyor.

"H" TYPE LEG SUPPORT (Heavy Duty)	
Model Number	Top of Leg Adjustments
HHST "BF"-12.25-16.25	12.25" - 16.25"
HHST "BF"-14.25-20.25	14.25" - 20.25"
HHST "BF"-18.25-24.25	18.25" - 24.25"
HHST "BF"-22.25-28.25	22.25" - 28.25"
HHST "BF"-26.25-32.25	26.25" - 32.25"
HHST "BF"-30.25-42.25	30.25" - 42.25"
HHST "BF"-38.25-50.25	38.25" - 50.25"

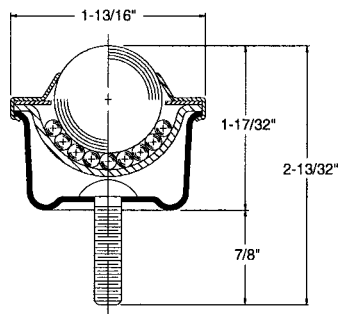
Skatewheels are responsible for supporting the product load. They are available either galvanized or aluminum to fit your specific conveyor or flowrail requirements.



### DESCRIPTION

- Part No. 102143 (Galvanized)
- Part No. 102144 (Aluminum)
- Non-precision wheel
- Seven 1/4 in. dia. hardened steel balls
- Pressed steel outer shell
- 50 lb. per wheel load capacity

Ball Transfers are one of the means by which products are transported in conveyor lines. They are compatible with all conveyors available for 24 Hour Shipment.



### DESCRIPTION

- Part No. 102106
- 1 in. dia. ball transfer
- 1/4 in. - 20 stud
- Pressed steel outer shell
- 50 lb. per ball transfer load capacity

Rollers are the means by which products are transported in most types of unit handling conveyor systems. They are available in many sizes with a multitude of bearing and axle options.

### 1 3/8 in. dia. x 18 ga. Roller

#### DESCRIPTION

**Roller No.:** 25904 - BF (Galvanized)

**Roller No.:** 25898 - BF (Aluminum)

**Tube:** 1 3/8 in. O.D. x 18 ga. (0.049 in.)

**Axle:** 1/4 in. round

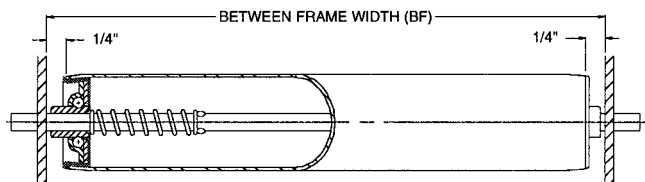
**Bearing No.:** 102151 - plain

**Spring No.:** 25279

**Weight (lbs.):**  $0.13 + 0.07 \times \text{BF}$

**Between Frame Widths:** 10 in., 13 in., 16 in., 22 in. and 28 in. between frame widths.

**Capacity:** 98 lbs. at optimum between frame width.



### 1.9 in. dia. x 16 ga. Roller

#### DESCRIPTION

**Roller No.:** 26157 - BF

**Tube:** 1.9 in. O.D. x 16 ga. galvanized (0.065 in.)

**Axle:** 7/16 in. hex

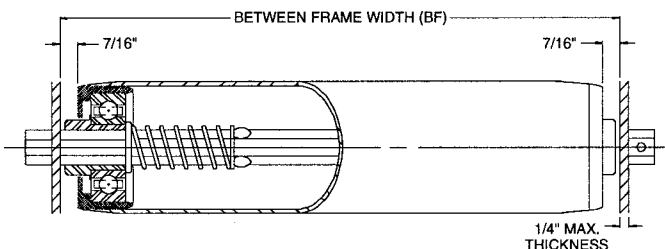
**Bearing No.:** 102154 - plain

**Spring No.:** 11375

**Weight (lbs.):**  $0.35 + 0.15 \times \text{BF}$

**Between Frame Widths:** 14 in., 18 in., 22 in., 26 in., 32 in. and 38 in. between frame widths.

**Capacity:** 260 lbs. at optimum between frame width.



Rollers are the means by which products are transported in most types of unit handling conveyor systems. They are available in many sizes with a multitude of bearing and axle options.

## 1.9 in. dia. x 16 ga. Roller

### DESCRIPTION

**Roller No.:** 37824 - BF

**Tube:** 1.9 in. O.D. x 16 ga. galvanized (0.065 in.)

**Axle:** 7/16 in. hex

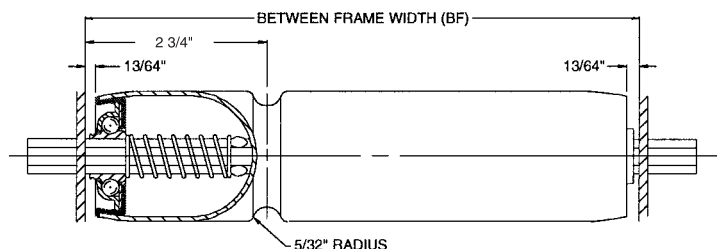
**Bearing No.:** 102154 - plain

**Spring No.:** 11375

**Weight (lbs.):**  $0.35 + 0.15 \times \text{BF}$

**Between Frame Widths:** 14 in., 18 in., 22 in., 26 in., 32 in. and 38 in. between frame widths.

**Capacity:** 260 lbs. at optimum between frame width.



## 1.9 in. dia. x 16 ga. Roller

### Double Groove

### DESCRIPTION

**Roller No.:** 37825 - BF

**Tube:** 1.9 in. O.D. x 16 ga. galvanized (0.065 in.)

**Axle:** 7/16 in. hex

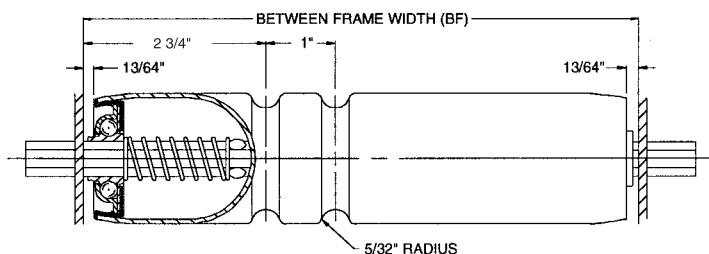
**Bearing No.:** 102154 - plain

**Spring No.:** 11375

**Weight (lbs.):**  $0.35 + 0.15 \times \text{BF}$

**Between Frame Widths:** 14 in., 18 in., 22 in., 26 in., 32 in. and 38 in. between frame widths.

**Capacity:** 260 lbs. at optimum between frame width.



## 2 1/2 in. dia. x 11 ga. Roller

### DESCRIPTION

**Roller No.:** 11547 - BF

**Tube:** 2 1/2 in. O.D. x 11 ga. (0.120 in.)

**Axle:** 11/16 in. hex

**Bearing No.:** 102054 - plain

**Spring No.:** 11388

**Weight (lbs.):**  $1.25 + 0.37 \times \text{BF}$

**Between Frame Widths:** 14 in., 18 in., 22 in., 26 in., 32 in. and 38 in. between frame widths.

**Capacity:** 650 lbs. at optimum between frame width.

